

# Healthcare Storage Solutions



Organize Supplies • Reduce Inventory • Utilize Space

# CLEAR STORAGE SOLUTIONS

**Save Time Looking For Supplies!**

**Clear Bins Provide:**

- Maximum Visibility
- Easy Parts Identification
- Optimized Storeroom Efficiency



**Shelf Bin**  
30120SCLAR



**AkroBin**  
30230SCLAR



**Super-Size AkroBin**  
30286SCLAR



**ShelfMax Bin**  
30098SCLAR



**Stak-N-Store**  
13017SCLAR



**InSight Bin**  
305B1



**14" Supply Box**  
09514CFT



**AkroDrawer**  
31168SCRY

**Contents**

**Storage Bins & Totes ..... 3-12**

**Cabinets ..... 13-15**

**Louvered Panels & Racks..... 16**

**Wire Shelving Units & Components .... 17-20**

**Carts, Trucks & Dollies ..... 21-23**

**5S Lean & Kanban ..... 24**

# AkroBins®

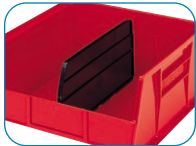
- Separate look-alike/sound-alike medications using different colors of bins
- Multiple sizes and colors allow **color coding** (vertically and horizontally) and **easy identification** of supplies
- Molded of industrial-grade polymers
- Bins sit on shelves or hang from Akro-Mils panels, racks, rails and carts
- AkroBins stack securely to optimize shelf space
- Wide hopper fronts ensure easy access
- Available in 9 colors including Clear



30250SCLAR



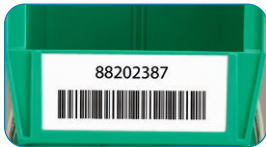
30230STONE



Lengthwise dividers keep items separated



"See-through" clear bin lids protect contents



Large front label slot for easy coding and scanning



30237 fits perfectly on 18" deep shelving for a two-bin Kanban system. See page 24 for more details.



AWS184830260G AkroBin Wire System

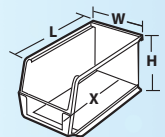


AkroBins Model No.	Outside Dimensions (In.)			Capacity/Quantity		Accessories					
	L	W	H	Bin Load Cap. On Rack	Bin Ctn. Qty.	Black Length Dividers**	Width Dividers**	Divider Pkg. Qty.	Bin Lids***	Lid Pkg. Qty.	
30210*	5-3/8	4-1/8	3	10 lbs.	24	40210 (1)	—	6	30211CRY	24	
30220*	7-3/8	4-1/8	3	10 lbs.	24	40220 (1)	—	6	30221CRY	24	
30237	9-1/4	6	5	20 lbs.	12	40237 (1)	—	6	—	—	
30224	10-7/8	4-1/8	4	20 lbs.	12	40224 (1)	—	6	30225CRY	12	
30230*	10-7/8	5-1/2	5	30 lbs.	12	40230 (1)	41230 (3)	6	30231CRY	12	
30234	14-3/4	5-1/2	5	50 lbs.	12	40234 (1)	—	6	—	—	
30239	10-7/8	8-1/4	7	50 lbs.	6	40239 (1)	—	6	—	—	
30240*	14-3/4	8-1/4	7	60 lbs.	12	40245 (1)	—	6	—	—	
30265	18	8-1/4	9	60 lbs.	6	40265 (1)	—	6	—	—	
30235	10-7/8	11	5	50 lbs.	6	40230 (3)	—	6	30236CRY	6	
30260	18	11	10	60 lbs.	6	40260 (3)	—	6	—	—	
30255	10-7/8	16-1/2	5	60 lbs.	6	40230 (3)	—	6	—	—	
30250*	14-3/4	16-1/2	7	75 lbs.	6	40245 (3)	41250 (3)	6	—	—	
30270	18	16-1/2	11	75 lbs.	3	40270 (3)	41270 (3)	6	—	—	
30320	8-5/8	33	5	80 lbs.	4	40321 & 40220 (7)	—	7/6	—	4	

Order in carton quantities. One color per carton: Specify Red, Blue, Yellow, Stone, Clear, Green or Black. \*Available in Purple and Light Blue. Other colors available, minimum quantities apply. CAUTION: When using bins with hanging systems, do not exceed the weight capacity for the rack, which may be less than the total sum of bin capacities. 40321=Fall Divider; 40220=Short Divider. \*\*() = Max. # of dividers per bin. \*\*\*Assembly required.

AkroBin Wire Systems			Shelf Dimensions (In.)			Quantity	
Model No.	Description	Available Colors	D	L	H	# of Bins	Shelves
AWS143630320	Wire Shelving w/ 30320 Bins	B, R, Y, S, SC	14	36	74	12‡	11
AWS143630240	Wire Shelving w/ 30240 Bins	B, R, Y, G, K, S, SC	14	36	74	36	4
AWS143630250	Wire Shelving w/ 30250 Bins	B, R, Y, G, K, S, SC	14	36	74	18	4
AWS184830260	Wire Shelving w/ 30260 Bins	B, R, Y, G, K, S, SC	18	48	74	24‡	6
AWS183630265	Wire Shelving w/ 30265 Bins	B, R, Y, G, K, S, SC	18	36	74	18‡	5
AWS183630270	Wire Shelving w/ 30270 Bins	B, R, Y, G, K, S, SC	18	36	74	9‡	5

Bin color code: R=Red, B=Blue, Y=Yellow, G=Green, K=Black, S=Stone, SC=Clear. Specify one bin color when ordering. †Bonus bins included.



# InSight® Bins

- Provide **maximum visibility** to users in a sleek, modern design
- Can stack, sit on shelving or hang on Akro-Mils rails, louvered panels or racks
- Optional lids protect contents from dust – will stack with lids in place
- Patent Pending: No-tip feature when bins are stacked
- Large label area for part identification and bar code scanning
- Autoclavable
- Available in 4 sizes



305A3



Bins stack with lids in place

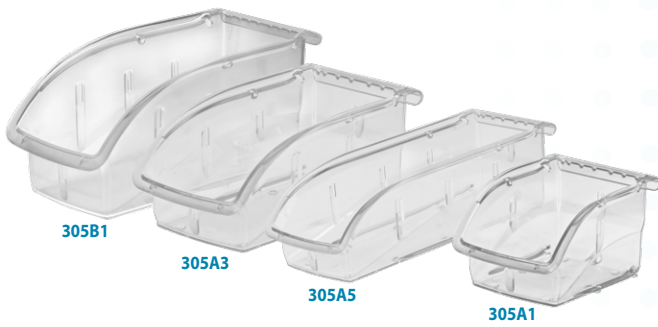


Lids protect bin contents from dust

*insight*  
by Akro-Mils



305A3

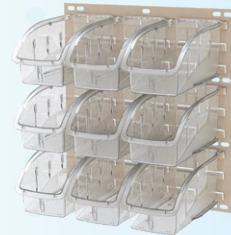


305B1

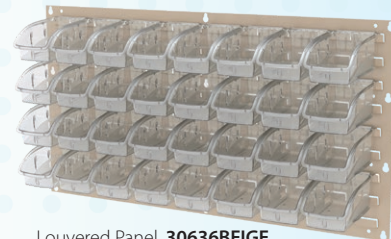
305A3

305A5

305A1

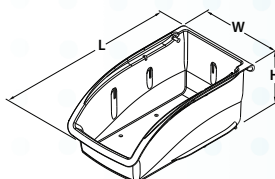


Louvered Panel, **30618BEIGE** shown with **305B1** bins.



Louvered Panel, **30636BEIGE** shown with **305A3** bins.

InSight Model No.	Outside Dimensions (In.)			Capacity/Quantity		Accessories	
	L	W	H	Capacity (lbs.)	Bin Ctn. Qty.	Lid	Lid Pkg Qty.
305A1	5-3/8	4-1/8	3-1/4	10	16	305A2	16
305A3	7-3/8	4-1/8	3-1/4	10	16	305A4	16
305A5	10-7/8	4-1/8	3-1/4	15	12	305A6	12
305B1	10-7/8	5-1/2	5-1/4	25	12	305B2	12



# in ( ) represents divider slots per bin.

# Super-Size AkroBins®

- Perfect for organizing and protecting **large or bulky items**
- Heavy-duty bins stack securely atop each other or sit on shelving
- Molded of industrial-grade polymers
- Window inserts, hinged lids and dividers available for expanded storage options
- Available in 12 sizes and 5 colors: Red, Blue, Yellow, Gray or Clear



30290BLUE



30286SCLAR



Optional dividers keep parts separated widthwise or lengthwise



Easy to carry with **large handle** molded onto back of bin

Super-Size AkroBins Model No.	Outside Dimensions (In.)			Available Colors	Capacity/Quantity			Accessories			
	L	W	H		Max. Cap. per Bin	Stacking Cap./= Qty. Stacked	Ctn. Qty.	Width Dividers*	Length Dividers*	Divider Pkg. Qty. W L	
30280	20	12-3/8	6	R, B, Y, SC, G	200 lbs.	40 lb./10	4	—	40280 (3)	—	2
30281	20	12-3/8	8	R, B, Y, SC, G	200 lbs.	50 lb./7	3	—	40281 (3)	—	3
30282	20	12-3/8	12	R, B, Y, SC, G	200 lbs.	60 lb./5	2	—	40282 (3)	—	1
30283	20	18-3/8	12	R, B, Y, SC, G	300 lbs.	150 lb./5	1	—	40282 (3)	—	1
30284	23-7/8	8-1/4	7	R, B, Y, SC, G	200 lbs.	150 lb./5	4	41284 (2)	40286 (1)	2	4
30286	23-7/8	11	7	R, B, Y, SC, G	200 lbs.	150 lb./5	4	41286 (2)	40286 (3)	2	4
30287	23-7/8	11	10	R, B, Y, SC, G	300 lbs.	150 lb./5	4	41287 (2)	40287 (3)	6	6
30288	23-7/8	16-1/2	11	R, B, Y, SC, G	300 lbs.	150 lb./5	1	41288 (2)	40287 (3)	6	6
30289	23-7/8	18-1/4	12	R, B, Y, SC, G	300 lbs.	150 lb./5	1	41289 (2)	—	2	—
30290	29-1/4	18-3/8	12	R, B, Y, SC, G	300 lbs.	150 lb./5	1	—	40290 (3)	—	1
30292	29-7/8	11	10	R, B, Y, SC, G	300 lbs.	150 lb./5	4	41287 (2)	40292 (3)	6	6
30293	29-7/8	16-1/2	11	R, B, Y, SC, G	300 lbs.	150 lb./5	1	41288 (2)	40292 (3)	6	6

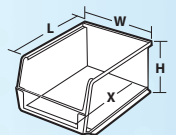
One color per carton: Specify Red, Blue, Yellow, Clear or Gray. Not recommended to hang on rack or panel systems. Order in carton quantities. \* ( ) = Max. # of divider slots per bin. † Assembly required.



AWS184830282Y  
Super-Size AkroBin Wire System

Super-Size AkroBin Wire Systems			Shelf Dimensions (In.)			Quantity	
Model No.	Description	Available Colors	D	L	H	# of Bins	Shelves
AWS184830280	Wire Shelving w/ 30280 Bins	R, B, Y	18	48	74	24	9
AWS184830281	Wire Shelving w/ 30281 Bins	R, B, Y	18	48	74	18	7
AWS184830282	Wire Shelving w/ 30282 Bins	R, B, Y	18	48	74	12	5
AWS184830283	Wire Shelving w/ 30283 Bins	R, B, Y	18	48	74	8	5
AWS18485AB	Wire Shelving w/ 30280, 30281, 30282, 30283 Bins	B	18	48	74	4/3/4/4†	6
AWS24360284	Wire Shelving w/ 30284 Bins	R, B, Y, SC	24	36	74	28	8
AWS24360287	Wire Shelving w/ 30287 Bins	R, B, Y, SC	24	36	74	16†	6
AWS24360288	Wire Shelving w/ 30288 Bins	R, B, Y, SC	24	36	74	12	3
AWS243605AB	Wire Shelving w/ 30287 & 30288 Bins	B	24	36	74	12/6†	3
AWS24361288	Wire Shelving w/ 30288 Bins	R, B, Y, SC	24	36	63	10	3

Bin color code: R=Red, B=Blue, Y=Yellow, SC=Clear. Specify one bin color when ordering. † Bonus bins included.



# ShelfMax® Bins

- 6" tall bins expand your storage capacity up to 85% over traditional 4" bins
- Front opening is .75" higher than comparable products
- **Superior, durable construction** compared to corrugated bins
- Width dividers keep items neatly separated
- Rolled ridge for added strength when filled to maximum capacity
- Works with 12", 18" and 24" deep shelving
- 12 sizes and 4 color options: Red, Blue, or Clear, also available in Yellow, minimum quantities apply



30048RED

30090BLUE



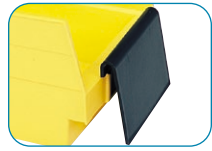
30098SCLEAR



**Black Width Dividers** available for all sizes



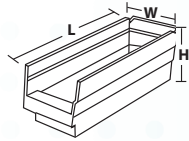
**Large handle** makes bin easy to carry



**40410 Label Holder** holds oversized labels or barcodes. See page 7.



**Large label area** on front of bin



30014

30040

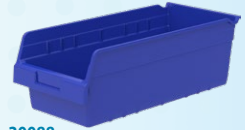


30048

30080



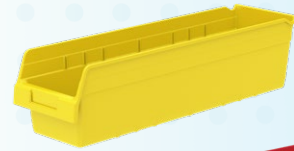
30084



30088



30090



30094



30098

ShelfMax Model No.	Outside Dimensions (In.)			In Stock Colors Other Colors Require Minimum Qty.	Capacity/Quantity		Accessories	
	L	W	H		Cubic Inches	Ctn. Qty.	Black Width Dividers*	Divider Pkg. Qty.
30040	11-5/8	4-1/8	6	R, B, SC	175	16	40020 (7)	12
30090	11-5/8	6-5/8	6	R, B, SC	310	10	40030 (7)	12
30080	11-5/8	8-3/8	6	R, B, SC	398	8	40040 (7)	12
30048	17-7/8	4-1/8	6	R, B, SC	280	8	40020 (7)	12
30098	17-7/8	6-5/8	6	R, B, Y, SC	505	10	40030 (7)	12
30088	17-7/8	8-3/8	6	R, B, SC	648	8	40040 (7)	12
30094	23-5/8	6-5/8	6	R, B, SC	686	10	40030 (7)	12
30084	23-5/8	8-3/8	6	R, B, SC	935	6	40040 (7)	12
30014	23-5/8	11-1/8	6	R, B, SC	1303	6	-	12

One color per carton: Specify Red, Blue, Yellow or Clear. Order in carton quantities. \* ( ) = Max. # of divider slots per bin.



**AWS183630098Y**  
6" ShelfMax Bin Wire System

6" ShelfMax Wire Shelving Systems			Bin Dimensions (In.)			Shelf Dimensions (In.)			Quantity	
Model No.	Description	Available Colors	L	W	H	D	L	H	Bins	Shelves
AWS183630098	Wire Shelving w/ 30098 Bins	Y	17-7/8	6-5/8	6	18	36	74	40	9

Bin color code: Y=Yellow. Specify one bin color when ordering.

# Shelf Bins

- Keep supplies neat and organized
- Create cleaner work areas – **eliminate cardboard** with reusable, eco-friendly bins
- Easy to label and color code for quick identification
- Works with 12", 18" and 24" deep shelving
- Bins nest when empty for space savings
- Built-in hanglock allows bin to tilt out on shelving for complete access
- Works in temperatures down to -20° F
- 13 sizes and 5 color options: Red, Blue, Yellow, Green or Clear



30130SCLEAR



30130BLUE



30138YELLOW



30164GREEN



**Bin Cups** lift out for easy access



**Dividers** create additional compartments



**40410 Label Holder** holds oversized labels or barcodes.

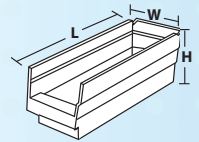


30138BLUE with 40130 Dividers

Shelf Bins	Outside Dimensions (In.)			Capacity/Quantity		Cups per Bin		Accessories	
	Model No.	L	W	H	Bin Load Capacity	Ctn. Qty.	Small 30101	Large 30102	Width Dividers* Pkg. Qty.
30110	11-5/8	2-3/4	4	7 lbs.	24	3	–	–	–
30120	11-5/8	4-1/8	4	10 lbs.	24	5	2	40120 (7)	24
30130	11-5/8	6-5/8	4	15 lbs.	12	9	4	40130 (7)	24
30150	11-5/8	8-3/8	4	15 lbs.	12	11	4	40150 (7)	24
30170	11-5/8	11-1/8	4	20 lbs.	12	15	6	40170 (7)	24
30128	17-7/8	4-1/8	4	15 lbs.	12	8	3	40120 (7)	24
30138	17-7/8	6-5/8	4	20 lbs.	12	15	6	40130 (7)	24
30158	17-7/8	8-3/8	4	20 lbs.	12	15	6	40150 (7)	24
30178	17-7/8	11-1/8	4	20 lbs.	12	25	12	40170 (7)	24
30124	23-5/8	4-1/8	4	20 lbs.	12	11	4	40120 (7)	24
30164	23-5/8	6-5/8	4	20 lbs.	6	21	8	40130 (7)	24
30184	23-5/8	8-3/8	4	20 lbs.	6	25	8	40150 (7)	24
30174	23-5/8	11-1/8	4	20 lbs.	6	35	16	40170 (7)	24

One color per carton. Specify Red, Blue, Yellow, Green or Clear. Order in carton quantities. \* ( ) = Max. # of dividers per bin.

Accessories		Outside Dimensions (In.)			Ctn. Qty.
Model No.	Description	L	W	H	
30101	Small Bin Cup	2	3-1/4	3	48
30102	Large Bin Cup	2-3/4	5	3	24
40410	10° Angle Extended Label Holder	–	4	2-1/4	24



**AWS244830174R**  
4" Shelf Bin Wire System

4" Shelf Bin Wire Systems		Available Colors	Shelf Dimensions (In.)			Quantity	
Model No.	Description		D	L	H	# of Bins	Shelves
AWS143630120	Wire Shelving w/ 30120 Bins	B, R, Y, SC	14	36	74	96	12
AWS143630130	Wire Shelving w/ 30130 Bins	B, R, Y, G, SC	14	36	74	60	12
AWS143630150	Wire Shelving w/ 30150 Bins	B, R, Y, G, SC	14	36	74	48	12
AWS143630170	Wire Shelving w/ 30170 Bins	B, R, Y, G, SC	14	36	74	36	12
AWS183630128	Wire Shelving w/ 30128 Bins	B, R, Y, G, SC	18	36	74	96	12
AWS183630138	Wire Shelving w/ 30138 Bins	B, R, Y, G, SC	18	36	74	60	12
AWS183630158	Wire Shelving w/ 30158 Bins	B, R, Y, G, SC	18	36	74	48	12
AWS183630178	Wire Shelving w/ 30178 Bins	B, R, Y, G, SC	18	36	74	36	12
AWS244830124	Wire Shelving w/ 30124 Bins	B, R, Y, G, SC	24	48	74	120	12
AWS244830164	Wire Shelving w/ 30164 Bins	SC	24	48	74	66	12
AWS244830184	Wire Shelving w/ 30184 Bins	B, R, Y, G, SC	24	48	74	60‡	12
AWS244830174	Wire Shelving w/ 30174 Bins	B, R, Y, G, SC	24	48	74	48‡	12

Bin color code: R=Red, B=Blue, Y=Yellow, G=Green, SC=Clear. Specify one bin color when ordering. ‡8 Bonus bins included.

# AkroDrawers®

- Offered in 12", 18" or 24" depths to work with shelving
- **Easy to label and color code inventory for quick identification of supplies**
- Wide front handle for easy gripping
- Drawers fit securely in cabinets or enclosed steel shelving for dust-free storage
- Dividers available to keep contents neatly separated in drawers
- Available in 8 sizes and 2 standard colors, Blue and Gray
- Also available in Red, Yellow and Crystal Clear, minimum quantities apply



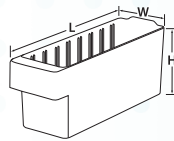
31148BLU



**Backstop tab** ensures bins tilt out without falling



**Large label area** and wide handle



AkroDrawers Model No.	Outside Dimensions (In.)			Capacity/Qty.		Accessories	
	L	W	H	Weight Capacity	Ctn. Qty.	Dividers	Pkg. Qty
31142	11-5/8	3-3/4	4-5/8	15 lbs.	6	41440	6
31148	17-5/8	3-3/4	4-5/8	20 lbs.	6	41440	6
31162	11-5/8	5-9/16	4-5/8	20 lbs.	6	41460	6
31168	17-5/8	5-9/16	4-5/8	25 lbs.	6	41460	6
31182	11-5/8	8-3/8	4-5/8	20 lbs.	4	41480	6
31188	17-5/8	8-3/8	4-5/8	25 lbs.	4	41480	6
31112	11-5/8	11-1/8	4-5/8	25 lbs.	4	41410	8
31118	17-5/8	11-1/8	4-5/8	25 lbs.	4	41410	8

One color per carton: Specify Blue or Gray. Yellow, Red and Crystal Clear available, minimum quantities apply.

## AkroDrawers®



31142GRY

31162YEL

31182BLU

31188RED

31168CRY

# Tote Caddy

- Compact, hand-held supply caddy
- Functional, deep compartments hold loose items, cleaning supplies or tools for easy transport
- The perfect phlebotomy caddy!
- Molded of heavy-duty, industrial-grade polymers for lasting durability
- Available in Blue

Tote Caddy		Dimensions (In.)			Ctn. Qty.
Model No.	Description	L	W	H	
09185BLUE	Blue Tote Caddy	13 7/8	18 3/8	9	6

Order in carton quantities.



The 18" long caddy has plenty of room for supplies



# 1800 Series AkroBins®

- Storage system for heavy, bulky items
- Strong, durable – molded of industrial-grade polymers
- Stackable with reinforcing ribs to prevent spreading under heavy loads
- Front and back finger grips for easy handling
- One black width divider included per bin
- Color: Beige



30348BEIGE



Removable divider for increased storage flexibility



Large front label area for content identification



Curved-bottom hopper front for easy content access

1800 Series Model No.	Outside Dimensions (In.)			Ctn. Qty.	Dividers	Pkg. Qty.	Capacity (Lbs.)
	L	W	H				
30348BEIGE	20-1/2	8-1/4	7	6	40348 (3)	6	60
30358BEIGE	20-1/2	11	7	6	40358 (3)	6	75

Available in Beige. Order in carton quantities.



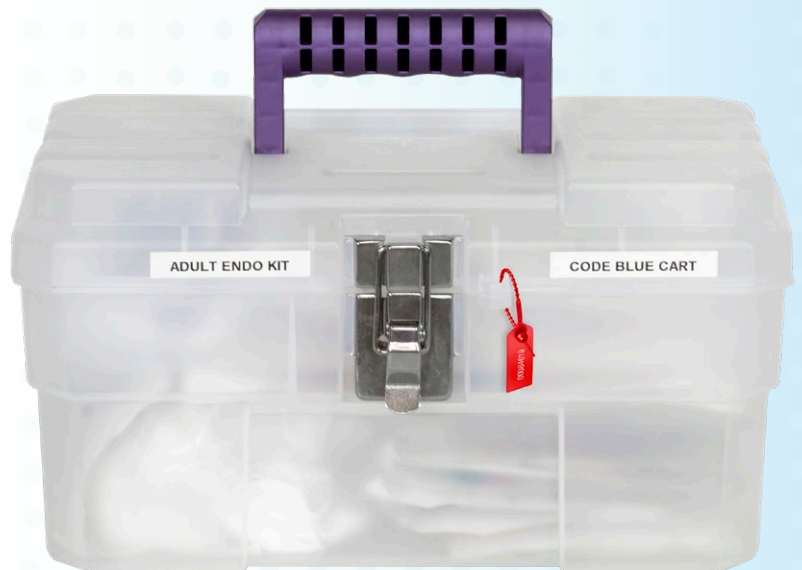
AWS2460M30358  
1800 Series AkroBin  
Mobile Wire System

1800 Series AkroBin Wire Systems		Shelf Dimensions (In.)			Quantity	
Model No.	Description	D	L	H	# of Bins	Shelves
					AWS2460M30358	Mobile Wire Shelving w/ 30358 Bins

#Bonus bins included.

# 14" Supply Box

- Great as a supply transport tote or emergency box
- Removable tray keeps smaller items quickly accessible
- Molded of heavy-duty, industrial-grade polymers for lasting durability
- Oversized padlock eye accepts a variety of padlocks or zip ties in order to make the box tamper-evident
- Available in Clear



Supply Box		Dimensions (In.)			Ctn. Qty.
Model No.	Description	L	W	H	
09514CFT	Clear Supply Box	14	8 3/8	8 3/8	3

Order in carton quantities.

# Attached Lid Containers

- Securely store and transport supplies
- Maximum product protection
- Smooth interior for easy cleaning
- Stackable design, nestable to save space
- **Attached lids snap securely and do not get lost**
- Eliminate use of corrugated boxes
- Multiple colors to easily color code and identify contents



39120BLUE



39085



39120



39160



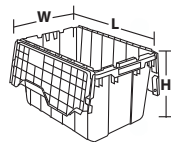
Lids can be zip-tied for added security during transport or storage



Containers nest when empty



Containers stack on closed lids



Attached Lid Containers (ALCs)		Outside Dimensions (In.)			Capacity/Qty.				
Model No.	Available Colors	L	W	H	Cu. Ft.	Gal.	Lbs.	Container Ctn. Qty.	Stack Cap./Qty. Stacked
39085	Blue, Gray	21-1/2	15	9	1.12	8.5	35	6	35 lbs./5
39120	Blue, Green, Red, Gray	21-1/2	15	12-1/2	1.62	12	65	6	65 lbs./5
39160	Gray	27	17	12-1/2	2.25	16.83	100	4	100 lbs./4
39170	Blue, Gray	21-1/2	15	17	2.28	17	100	3	100 lbs./3
39175	Gray	24	19-1/2	12-1/2	2.3	17.20	80	4	80 lbs./5
39280	Gray	28	21	15-1/2	3.82	28.57	100	2	100 lbs./4

Order in carton quantities. Specify Blue, Gray, Red, Green or Clear. Specify color when ordering.

# Stak-N-Store Bins

- Stacking bins are ideal for large, bulky items
- Eliminate corrugated containers from storage areas
- Wide hopper front for easy access
- Same size bins can be stacked atop one another on flooring or shelving
- Easy to label
- Available in 3 sizes and 3 colors: Blue, Gray or Clear



Large comfort grip handles for easy lifting



Side ribs add reinforcement for stacking stability



Hopper front for easy access



13017SCLAR



13014BLUE



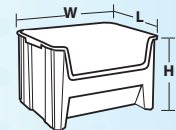
13018BLUE



AWS1836SNSGRY  
Stak-N-Store Bin Wire System

Stak-N-Store Bins	Outside Dimensions (In.)			Capacity/Quantity				
	Model No.	L	W	H	Cu. Ft.	Gal	Lbs.	Stacking Height
13014	17-1/2	10-7/8	12-1/2	.98	7.4	75	3	4
13017	15-1/4	19-7/8	12-7/16	1.7	12.7	75	3	3
13018	17-1/2	16-1/2	12-1/2	1.6	12	75	3	2

One color per carton. Specify, Blue, Grey or Clear. Order in carton quantities.

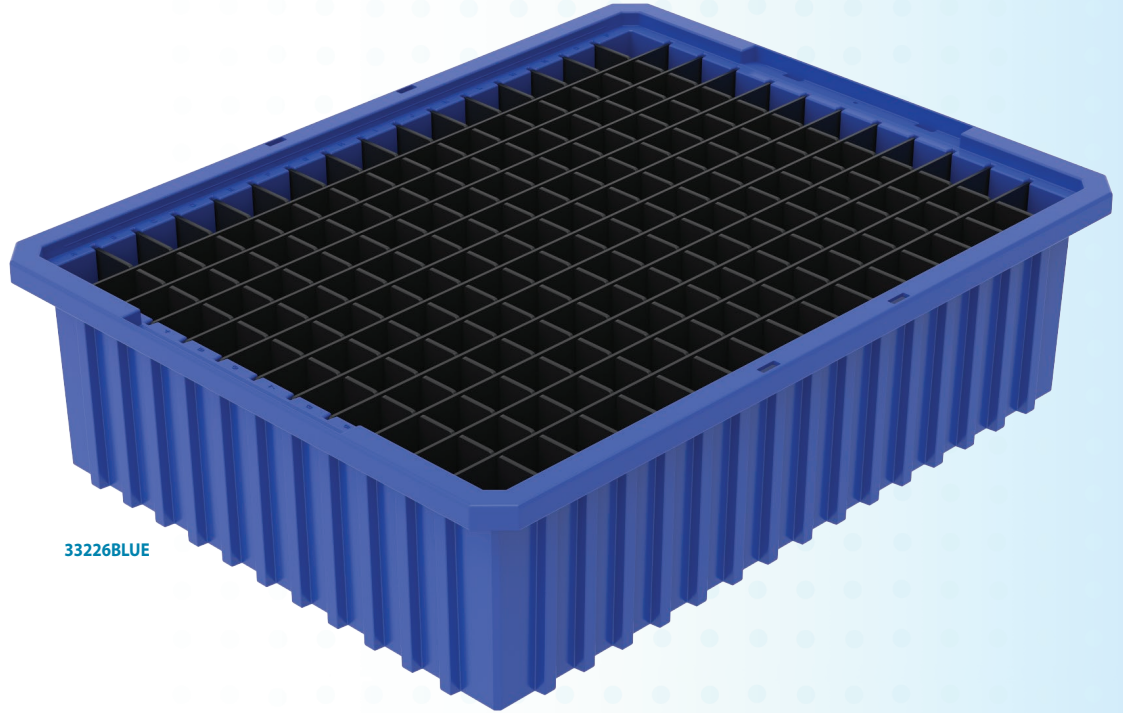


Stak-N-Store Wire Systems			Shelf Dimensions (In.)			Quantity	
Model No.	Description	Available Colors	D	L	H	# of Bins	Shelves
AWS184813017	Wire Shelving w/ 13017 Bins	B	18	48	74	9†	5
AWS183613014	Wire Shelving w/ 13014 Bins	GRY, B	18	36	74	12	5
AWS183613018	Wire Shelving w/ 13018 Bins	GRY, B, SC	18	36	74	8	5
AWS1836SNS	Wire Shelving w/ 13014 & 13018 Bins	GRY, B, SC	18	36	74	8/6†	5

Bin color code: B=Blue, GRY=Grey, SC=Clear. Specify one bin color when ordering. †Bonus bins included.

# Akro-Grids

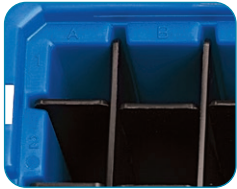
- Create custom sized compartments using optional lengthwise and crosswise dividers
- Great for organizing items and creating kits of items that are frequently used together
- 3 colors available for color coding and easy identification, also available in Clear, minimum quantities apply
- 10 sizes; same footprint models are stackable



33226BLUE



**Clear Snap-On Lids** keep contents clean and stack securely



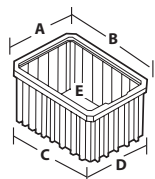
Molded-in **letter/number system** for easy tracking



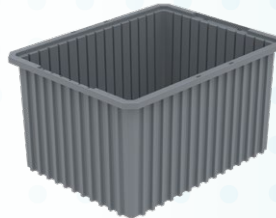
**Dividers** allow for the subdivision of containers



**Clear Plastic Label Holders** snap on any side of the container. Holds labels up to 5" x 3 3/4"



33165BLUE



33222GREY



33224RED

Akro-Grids Model No.	In Stock Colors Other Colors Require Minimum Qty.	Outside Dimensions (In.)			Capacity/Qty.				Accessories			
		L	W	H	Cu. Ft.	Gal	Lbs.	Bin Ctn. Qty.	Long Divider*	Short Divider*	Divider Pkg. Qty.	Max. No. of Compartments
33105	Blue, Gray, Red	10-7/8	8-1/4	5	.16	1.2	25	20	42105 (5)	41105 (7)	6	48
33162	Red	16-1/2	10-7/8	2-1/2	0.20	1.5	20	12	42162 (7)	41162 (7)	6	96
33164	Blue, Gray, Red	16-1/2	10-7/8	4	.29	2.2	20	12	42164 (7)	41164 (11)	6	96
33165	Red	16-1/2	10-7/8	5	0.39	2.9	35	12	42165 (7)	41165 (11)	6	96
33166	Blue, Gray, Red	16-1/2	10-7/8	6	.44	3.3	35	8	42166 (7)	41166 (11)	6	96
33168	Blue, Gray, Red	16-1/2	10-7/8	8	.59	4.4	40	6	42168 (7)	41168 (11)	6	96
33220	Blue, Gray, Red	22-3/8	17-3/8	10	1.66	12.4	50	2	42220 (11)	41220 (15)	6	192
33222	Blue, Gray, Red	22-1/2	17-1/2	12	2.10	15.9	60	3	42222 (11)	41222 (15)	6	192
33223	Blue, Gray, Red	22-1/2	17-3/8	3	.47	3.5	30	6	42223 (11)	41223 (15)	6	192
33224	Blue, Gray, Red	22-3/8	17-3/8	4	.61	4.6	30	6	42224 (11)	41224 (15)	6	192
33226	Blue, Gray, Red	22-3/8	17-3/8	6	.96	7.2	40	4	42226 (11)	41226 (15)	6	192
33228	Blue, Gray, Red	22-3/8	17-3/8	8	1.30	9.7	50	3	42228 (11)	41228 (15)	6	192

One color per carton. Specify Red, Blue or Gray. Order in carton quantities. \*(\*) = max # of dividers.

Clear Snap-On Lids		
Model No.	Fits Grid No.	Ctn. Qty.
33011	33105	10
33061	33164, 33166, 33168	4
33023	33220, 33222, 33223, 33224, 33226, 33228	3

Label Holders		
Model No.	Fits Grid No.	Pkg. Qty.
35010	Fits all except 33164, 33223, 33224	6

# TiltView®

- Space-saving system will improve organization and efficiency by keeping supplies in view
- Perfect for storing and displaying PPE (personal protective equipment)
- Can be used on a desktop, attached to steel rails, frames or louvered panels, and are wall mountable
- Cabinets are made of high-impact polystyrene; bins are made of polystyrene (GPS)
- Molded-in label holder (card stock labels included)



06704



Bins stack securely

TiltView Bins		Dimensions (In.)			Capacity/Qty.	
Model No.	Description	L	W	H	Ctn. Qty.	Capacity Lbs.
06702	2-Bin TiltView	12-5/16	23-5/8	14	1	30
06703	3-Bin TiltView	7-7/8	23-5/8	9-7/16	1	30
06704	4-Bin TiltView	6-3/4	23-5/8	8-3/16	1	25
06705	5-Bin TiltView	5-3/8	23-5/8	6-1/2	1	20
06706	6-Bin TiltView	3-3/4	23-5/8	4-1/2	1	15



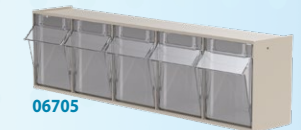
06702



06703



06704



06705



06706



06702 slides apart to form two separate bins



Attractive bins blend into any setting

## FREE GUIDE!

### Did you know?

Akro-Mils products can help you resolve common Joint Commission compliance issues.

- Maintain a safe and functional environment
- Organize and safely store medications and solutions
- Maintain clear and uncluttered hallways and entryways
- Reduce the risk of infection
- Maintain 18" of clear space between storage and the sprinkler system

Download our free guide at: <https://akro-mils.com/Resources/Compliance>

**AKRO-MILS** The Joint Commission® Compliance Issues & Solutions

The Joint Commission is an organization made up of individuals from the public and across all medical specialties who are dedicated to quality in medical facilities in the United States. Akro-Mils understands the Joint Commission's standards and provides solutions to help you meet them.

Joint Commission standards are in place to protect the public that live in facilities with acute care, ambulatory care, long-term care, and other types of medical facilities. The Joint Commission will not issue a certificate of accreditation until the facility meets the standards. Akro-Mils can help you meet the standards by providing solutions to help you meet them.

United States is one of the most common standards and guidelines for medical facilities. There are a number of standards that apply to medical facilities. Akro-Mils products can help you meet these standards.

Joint Commission Standard	Description of Problem	Product Solution	Product Images
HA-0001-01: The organization must have a safe and functional environment.	Cluttered work areas, unorganized supplies, and unclean work surfaces.	Akro-Mils provides solutions to help you meet the standards by providing solutions to help you meet them.	
HA-0001-02: The organization must have a clear and uncluttered hallway and entryway.	Cluttered hallways and entryways, unorganized supplies, and unclean work surfaces.	Akro-Mils provides solutions to help you meet the standards by providing solutions to help you meet them.	
HA-0001-03: The organization must have a clear and uncluttered work area.	Cluttered work areas, unorganized supplies, and unclean work surfaces.	Akro-Mils provides solutions to help you meet the standards by providing solutions to help you meet them.	

# Quick-View Security Bin Cabinets

- Lexan™ door panels allow easy viewing, even when cabinet is locked
- Keyed handle with 3-point locking system for total security, preventing damage or theft of sensitive supplies
- Purchase as complete kit using AkroBins® or TiltView® Bins
- All-welded 16-gauge steel construction
- Color: Beige



AC3618QV240



AC3618QV



AC3618QV250



Keyed handle  
(2 keys included)

Quick-View Security Bin Cabinet 36" W x 18" D x 78" H			Bin Dimensions (In.)			Qty. of Bins
Model No.	Description	AkroBin Model No.	L	W	H	
AC3618QV240	Beige Cabinet w/ Quick View Doors, Louvered Back, with Yellow AkroBins	30240YELLO	14¾	8¾	7	36
AC3618QV250	Beige Cabinet w/ Quick View Doors, Louvered Back, with Yellow AkroBins	30250YELLO	14¾	16½	7	18
AC3618QV	Beige Cabinet w/ Quick View Doors	-	-	-	-	-

# Standard Lockable Bin Cabinets

- All-Welded Bin Storage Cabinets
- Made of 16-gauge steel
- Louvered back wall panel
- Keyed handle with 3-point locking system. 2 keys included
- Color: Putty



Keyed handle  
(2 keys included)



AC3618YPUT

AkroBin Cabinet 36" W x 18" D x 78" H		AkroBin Quantity		
Model No.	Description	30230	30240	30250
AC3618PUT	Putty Cabinet w/ Louvered Panels on Back Wall, no Bins	-	-	-
AC3618YPUT	Putty Cabinet w/ Louvered Panels on Back Wall, with Assorted AkroBins	24	12	6

# 19-Series Steel Storage Cabinets

- Great for organizing small items such as dental instruments or lab supplies
- Helps to keep inventory accurate and dust-free
- Clear windows provide easy visibility of contents
- Stackable, wall mountable or can be used on 36" wide shelving
- Galvannealed steel frame with full steel shelf under each row of drawers
- 3 drawer colors: Blue, Black or Gray



19416



19228



19320



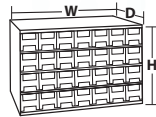
19416



19715

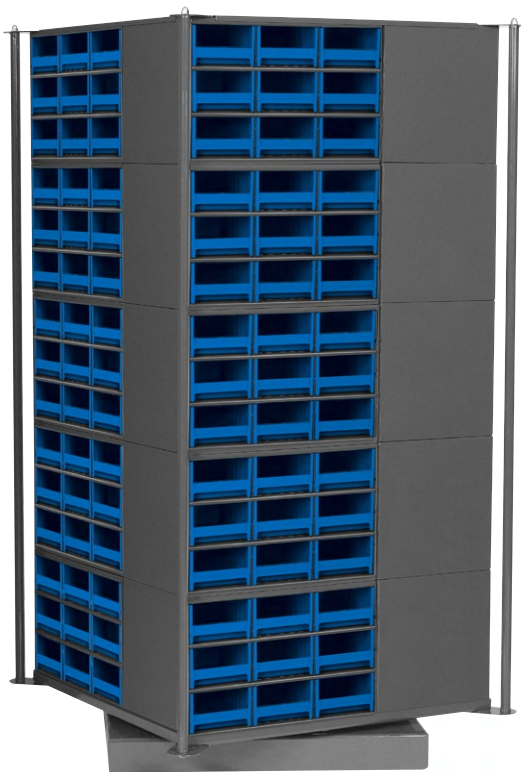


19909



19-Series Heavy-Duty Steel Cabinets			Drawer Dimensions (In.)			Ctn. Qty.
Model No.	Description	Drawers Per Cabinet	W	H	D	
19228	Gray Steel Storage Cabinet	28	2-3/16	2-1/16	10-9/16	1
19320	Gray Steel Storage Cabinet	20	3-3/16	2-1/16	10-9/16	1
19416	Gray Steel Storage Cabinet	16	4	2-1/8	10-9/16	1
19715	Gray Steel Storage Cabinet	15	3-3/16	3-1/16	10-9/16	1
19909	Gray Steel Storage Cabinet	9	5-3/16	3-1/16	10-9/16	1

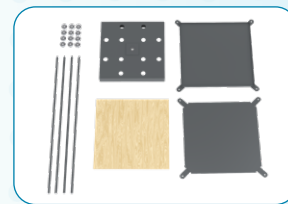
One drawer color per cabinet. Specify Blue, Gray or Black when ordering.



## 98325

### Storage-Go-Round

Securely holds (20) 19-Series Cabinets and as many as 560 drawers in less than 1 square yard of floor space. Holds up to 1,000 lbs. of supplies. Swing diameter 43 3/8".



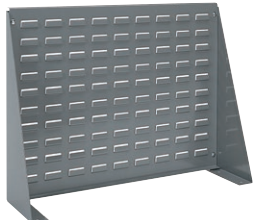
Cabinets sold separately

Storage-Go-Round		Assembled Dimensions (In.)			Compatible with Models*
Model No.	Description	L	W	H	
98325	Storage-Go-Round with turntable base	31	31	60	19228, 19320, 19416, 19715, 19909

Assembly required. \* 19-Series Cabinets sold separately.

# Louvered Panels, Floor Racks & Bench Racks

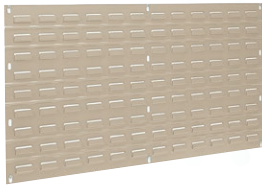
- Louvered Panels securely support AkroBins®, InSight® Bins, Universal Bins or Steel Cabinets (sold separately)
- Heavy-duty 16-gauge, cold-rolled steel for strength and durability
- Wall-mounted units keep items out of the way, off the floor and off the work table
- Floor racks can be placed near work areas to improve productivity
- Mobile Kits mobilize racks; easily relocate supplies without unloading and reloading bins
- Select models available in Beige, Gray or Textured White



**98600**  
Bench Rack



**30632**  
Single Row Louvered Panel



**30636BEIGE**  
Louvered Wall Panel



**30661BEIGE**  
Floor Rack



**30161TEXWHT**  
Louvered Wall Panel & 30255BEIGE AkroBins

AkroBin Louvered Hanging Systems			Dimensions (In.)				AkroBin Quantity to Fit Louvered Hanging System – AkroBins Model No.														
Model No.	Description	Ctn. Qty	L	W	H	Rack Wt. Cap. (lbs.)	30210	30220	30224	30230	30234	30235	30237	30239	30240	30250	30255	30260	30265	30270	30320
30618‡	Louvered Wall Panel	4	18	5/16	19	160	16	16	12	9	9	3	6	4	4	2	3	1	2	1	–
30632	Single Row Louvered Panel	2	2	31-15/16	5/16	80	7	7	7	5	5	2	5	3	3	1	1	2	3	1	–
30636 + ‡	Louvered Wall Panel	4	35-3/4	5/16	19	160	32	32	24	18	18	9	15	8	8	4	6	3	4	2	3
30161+	Louvered Wall Panel	1	36	5/16	61	1000	120	120	80	60	60	30	50	28	28	14	20	15	24	10	10
30118+ ‡	Louvered Wall Panel	1	18	5/16	61	500	60	60	40	30	30	10	20	14	14	7	10	5	12	5	–
30661	Single-Sided Rivet Floor Rack	1	36-3/16	13-1/2	66-3/8	500	120	120	80	60	60	30	50	28	28	14	20	15	24	10	10
30676	Double-Sided Rivet Floor Rack	1	36-3/16	25	66-3/8	1000	240	240	160	120	120	60	100	56	56	28	40	30	48	20	20
98600	Bench Rack	1	27-15/16	8-9/16	19-9/16	120	30	30	18	12	12	6	12	6	6	2	3	2	6	–	–
LVDMOBILE	Gray Mobile Kit for 30676	1	–	–	–	1500	–	–	–	–	–	–	–	–	–	–	–	–	–	–	–
30661DOLLY	Floor Rack Dolly for 30661	1	37	24	6	500	–	–	–	–	–	–	–	–	–	–	–	–	–	–	–

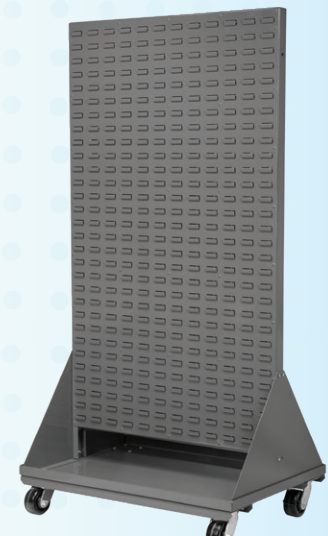
+Also available in Beige. ‡Also available in Textured White. Specify color when ordering. Beige = BEIGE, White = TEXWHT, Gray = Gray.



**30661** & **30661DOLLY** with AkroBins



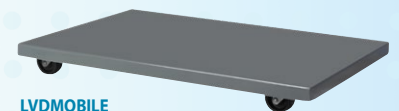
**30661**  
Floor Rack & **30661DOLLY**



**30676**  
Floor Rack & **LVDMOBILE**



**30661DOLLY**



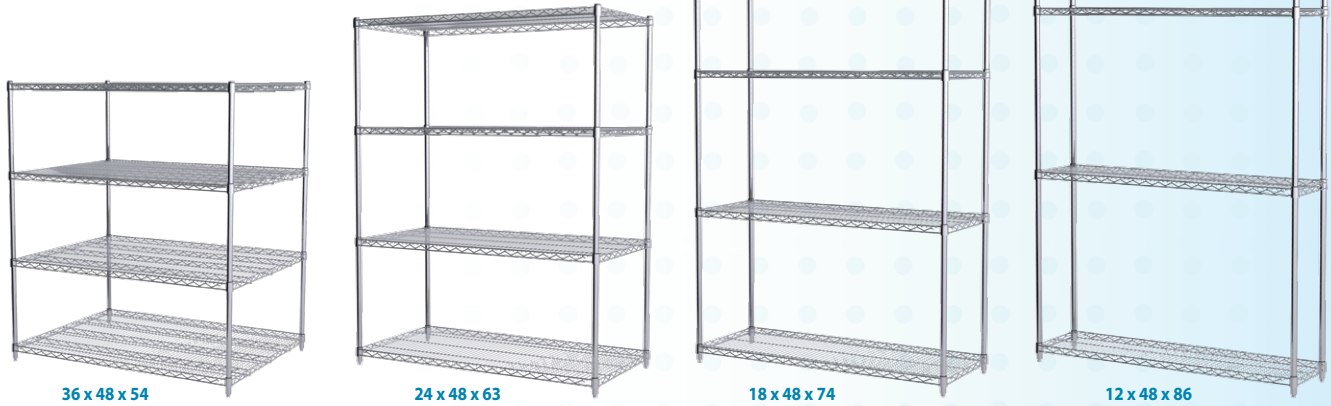
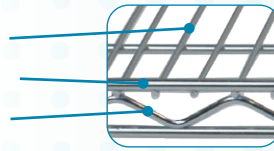
**LVDMOBILE**



# Wire Shelving Starter Units

- **Meet compliance regulations** by getting your supplies up off the floor with Wire Shelving Units
- Heavy-duty wire shelving units prevent dust accumulation and improve visibility of stored items. Assembles in minutes, no tools required
- Shelf Weight Capacity: 800 lbs. for shelf lengths up to 48", 600 lbs. for shelf lengths over 48"
- Units Include: 4 - chrome wire shelves with Quick-Adjust Post Sleeves, 4 - posts with Leveling Feet, 1 - 8 pack of "S" Hooks for creating continuous shelving runs or 90° angles
- Add labels, see page 20.

Deck Wire = 3.3mm  
 Frame Wire = 6.0mm  
 Truss Wire = 4.5mm

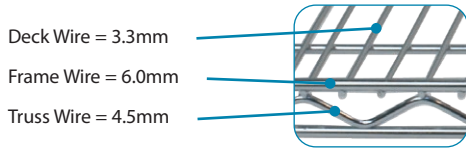


Wire Shelving Starter Units		Components		
Model No.	Description	Post Qty.	Shelf Qty.	S-Hook Qty.
AWS541224SU	Wire Shelving 54" High 12 x 24 Starter Unit	4	4	1 - 8 Pack
AWS541236SU	Wire Shelving 54" High 12 x 36 Starter Unit	4	4	1 - 8 Pack
AWS541436SU	Wire Shelving 54" High 14 x 36 Starter Unit	4	4	1 - 8 Pack
AWS541824SU	Wire Shelving 54" High 18 x 24 Starter Unit	4	4	1 - 8 Pack
AWS541830SU	Wire Shelving 54" High 18 x 30 Starter Unit	4	4	1 - 8 Pack
AWS541836SU	Wire Shelving 54" High 18 x 36 Starter Unit	4	4	1 - 8 Pack
AWS541848SU	Wire Shelving 54" High 18 x 48 Starter Unit	4	4	1 - 8 Pack
AWS542436SU	Wire Shelving 54" High 24 x 36 Starter Unit	4	4	1 - 8 Pack
AWS542448SU	Wire Shelving 54" High 24 x 48 Starter Unit	4	4	1 - 8 Pack
AWS542460SU	Wire Shelving 54" High 24 x 60 Starter Unit	4	4	1 - 8 Pack
AWS542472SU	Wire Shelving 54" High 24 x 72 Starter Unit	4	4	1 - 8 Pack
AWS631224SU	Wire Shelving 63" High 12 x 24 Starter Unit	4	4	1 - 8 Pack
AWS631236SU	Wire Shelving 63" High 12 x 36 Starter Unit	4	4	1 - 8 Pack
AWS631436SU	Wire Shelving 63" High 14 x 36 Starter Unit	4	4	1 - 8 Pack
AWS631824SU	Wire Shelving 63" High 18 x 24 Starter Unit	4	4	1 - 8 Pack
AWS631830SU	Wire Shelving 63" High 18 x 30 Starter Unit	4	4	1 - 8 Pack
AWS631836SU	Wire Shelving 63" High 18 x 36 Starter Unit	4	4	1 - 8 Pack
AWS631848SU	Wire Shelving 63" High 18 x 48 Starter Unit	4	4	1 - 8 Pack
AWS632436SU	Wire Shelving 63" High 24 x 36 Starter Unit	4	4	1 - 8 Pack
AWS632448SU	Wire Shelving 63" High 24 x 48 Starter Unit	4	4	1 - 8 Pack
AWS632460SU	Wire Shelving 63" High 24 x 60 Starter Unit	4	4	1 - 8 Pack
AWS632472SU	Wire Shelving 63" High 24 x 72 Starter Unit	4	4	1 - 8 Pack

Wire Shelving Starter Units		Components		
Model No.	Description	Post Qty.	Shelf Qty.	S-Hook Qty.
AWS741224SU	Wire Shelving 74" High 12 x 24 Starter Unit	4	4	1 - 8 Pack
AWS741236SU	Wire Shelving 74" High 12 x 36 Starter Unit	4	4	1 - 8 Pack
AWS741436SU	Wire Shelving 74" High 14 x 36 Starter Unit	4	4	1 - 8 Pack
AWS741824SU	Wire Shelving 74" High 18 x 24 Starter Unit	4	4	1 - 8 Pack
AWS741830SU	Wire Shelving 74" High 18 x 30 Starter Unit	4	4	1 - 8 Pack
AWS741836SU	Wire Shelving 74" High 18 x 36 Starter Unit	4	4	1 - 8 Pack
AWS741848SU	Wire Shelving 74" High 18 x 48 Starter Unit	4	4	1 - 8 Pack
AWS742436SU	Wire Shelving 74" High 24 x 36 Starter Unit	4	4	1 - 8 Pack
AWS742448SU	Wire Shelving 74" High 24 x 48 Starter Unit	4	4	1 - 8 Pack
AWS742460SU	Wire Shelving 74" High 24 x 60 Starter Unit	4	4	1 - 8 Pack
AWS742472SU	Wire Shelving 74" High 24 x 72 Starter Unit	4	4	1 - 8 Pack
AWS861224SU	Wire Shelving 86" High 12 x 24 Starter Unit	4	4	1 - 8 Pack
AWS861236SU	Wire Shelving 86" High 12 x 36 Starter Unit	4	4	1 - 8 Pack
AWS861436SU	Wire Shelving 86" High 14 x 36 Starter Unit	4	4	1 - 8 Pack
AWS861824SU	Wire Shelving 86" High 18 x 24 Starter Unit	4	4	1 - 8 Pack
AWS861830SU	Wire Shelving 86" High 18 x 30 Starter Unit	4	4	1 - 8 Pack
AWS861836SU	Wire Shelving 86" High 18 x 36 Starter Unit	4	4	1 - 8 Pack
AWS861848SU	Wire Shelving 86" High 18 x 48 Starter Unit	4	4	1 - 8 Pack
AWS862436SU	Wire Shelving 86" High 24 x 36 Starter Unit	4	4	1 - 8 Pack
AWS862448SU	Wire Shelving 86" High 24 x 48 Starter Unit	4	4	1 - 8 Pack
AWS862460SU	Wire Shelving 86" High 24 x 60 Starter Unit	4	4	1 - 8 Pack
AWS862472SU	Wire Shelving 86" High 24 x 72 Starter Unit	4	4	1 - 8 Pack

# Wire Shelving Components

Order the exact size shelves, posts and custom components to fit your space requirements!

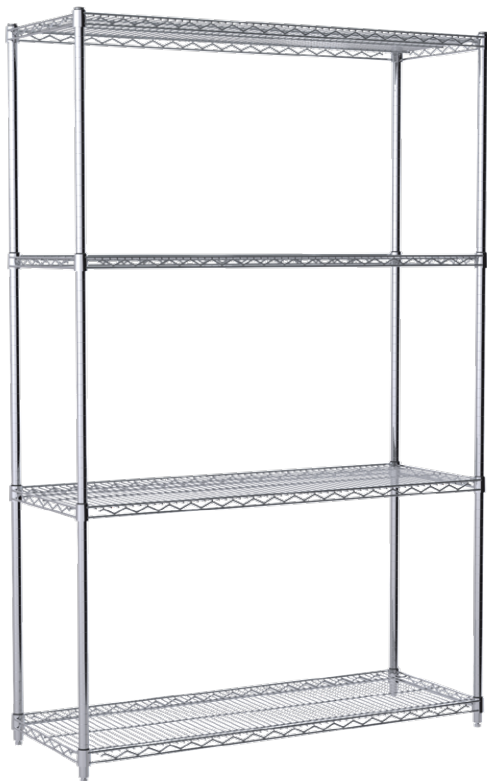


## Horizontal Shelves

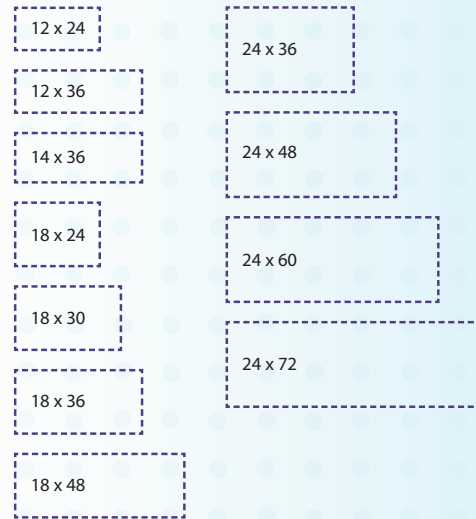
- NSF-Certified Wire Shelves - Plastic Quick-Adjust Clips included with each shelf. (replacement part: AWCLIP4PK).
- Weight Capacity (evenly distributed) per shelf: Lengths up to 48" = 800 lbs. Lengths over 48" = 600 lbs.
- Weight Capacity (evenly distributed) per stationary shelving unit = 2,000 lbs.
- Shelving can be assembled in minutes and no special tools are required

## Upright Posts

- Posts include a Leveling Foot to compensate for uneven surfaces. (Replacement part: AWFOOTLEVEL4PK)
- All posts include a plastic post top cap and a 3/8"-16 threaded base insert for installing feet and casters
- Durable nickel-chrome finish



## Available Shelf Sizes



Horizontal Shelf

Wire Shelves - Chrome		
Model No.	Description	Ctn. Qty.
AWS1224SHELF	12" x 24" Horizontal Wire Shelf	4
AWS1236SHELF	12" x 36" Horizontal Wire Shelf	4
AWS1436SHELF	14" x 36" Horizontal Wire Shelf	4
AWS1824SHELF	18" x 24" Horizontal Wire Shelf	4
AWS1830SHELF	18" x 30" Horizontal Wire Shelf	4
AWS1836SHELF	18" x 36" Horizontal Wire Shelf	4
AWS1848SHELF	18" x 48" Horizontal Wire Shelf	4
AWS2436SHELF	24" x 36" Horizontal Wire Shelf	4
AWS2448SHELF	24" x 48" Horizontal Wire Shelf	4
AWS2460SHELF	24" x 60" Horizontal Wire Shelf	2
AWS2472SHELF	24" x 72" Horizontal Wire Shelf	2



Shelf Posts



Posts include Leveling Foot

Wire Shelving Posts - Chrome		
Model No.	Description	Ctn. Qty.
AWP54UPRIGHT	54" Shelf Post	4
AWP63UPRIGHT	63" Shelf Post	4
AWP74UPRIGHT	74" Shelf Post	4
AWP86UPRIGHT	86" Shelf Post	4

# Wire Shelving Accessories

## Shelf Liner Mat

- 1mm thick clear polypropylene mat keeps small items from falling through shelves
- Prevents dust accumulation on shelves below

## Swivel Casters

- Create mobile shelving units and carts with these swivel caster sets
- Choose from 4" casters, 2 with brakes, 2 without, or 5" casters, all with brakes

## "S" Hooks

- Allow for continuous runs of shelving or 90° angles
- Use two hooks per shelf

## Leveling Feet

- Levels shelving units on uneven surfaces

## Steel Feet Immobilizers

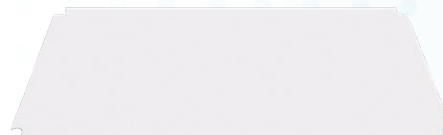
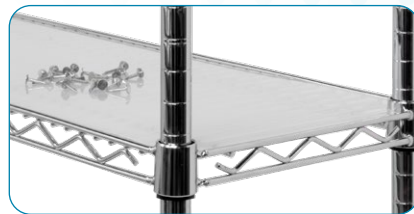
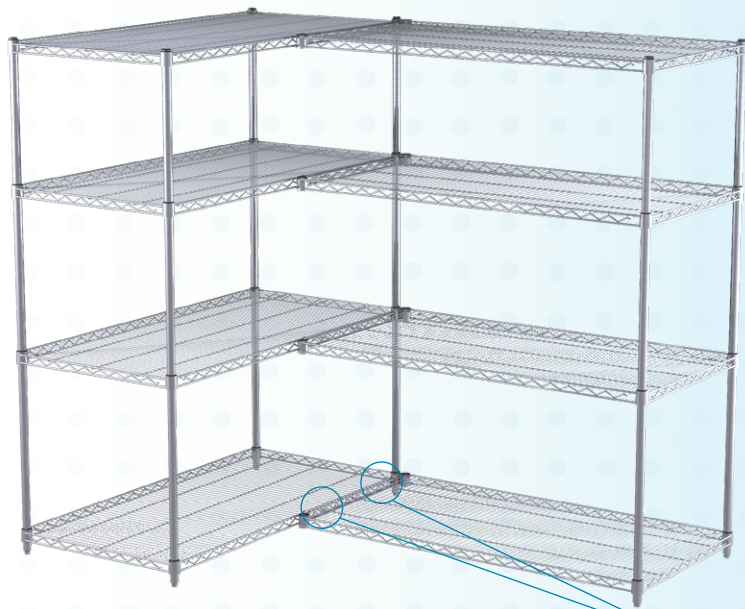
- Provides extra stability to shelving units
- Allows shelving units to be secured to the floor

## Donut Bumper

- Slides onto bottom of upright posts
- Add to mobile units to prevent them from damaging walls

## Quick-Adjust Clips

- For assembling shelves to posts

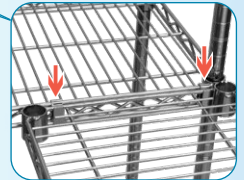


Shelf Liner Mat

Wire Shelving Shelf Liner Mats		
Model No.	Description	Ctn. Qty.
AW1236LINER	12" x 36" Shelf Liner	4
AW1836LINER	18" x 36" Shelf Liner	4
AW1848LINER	18" x 48" Shelf Liner	4
AW2436LINER	24" x 36" Shelf Liner	4
AW2460LINER	24" x 60" Shelf Liner	4
AW2472LINER	24" x 72" Shelf Liner	4



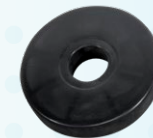
"S" Hooks



Leveling Feet



Steel Feet Immobilizers



Donut Bumper



Quick-Adjust Clips



4" Swivel Caster

4" Swivel Caster w/Brake

5" Swivel Caster w/Brake

Caster Sets		
Model No.	Description	Pkg. Qty.
AWCAST4	Set of 4 Casters - 2 w/Brakes 100 x 25 (4")	1
AWCAST5	Set of 4 Casters - 4 w/Brakes 125 x 25 (5")	1

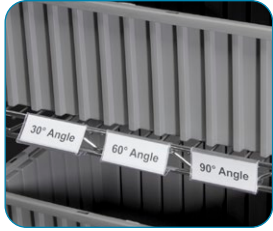
Wire Shelving Accessories		
Model No.	Description	Pkg. Qty.
AWFOOTLEVEL4PK	Set of 4 Leveling Steel Feet	4
AWFOOTPLATE4PK	Set of 4 Steel Feet Immobilizers	4
AWDONUT	Donut Bumper	1
AWSHOOK8PK	Set of 8 "S" Hooks	8
AWCLIP4PK	Set of 4 Quick-Adjust Clips	4

# Angle-Vu™ Adjustable Label Holder

**No more climbing or bending to read or scan a label!**

- The Angle-Vu snaps securely to the face of most existing wire shelving
- It allows the label face to be adjusted upward on low shelves and downward on high shelves for easy viewing and barcode scanning
- **Perfect for 1:1 labeling used in 5S Lean initiatives**
- The clear window protects the card stock label (provided)

29306



Low



High



Angle-Vu	Dimensions (In.)				Total No.	
Model No.	W	H	Cards Per Sheet	Sheets Per Pack	Cards Per Pack	Label Holders
29306	3	1-1/4	16	3	48	25

# Flat Label Holder

- Attaches to the face of wire shelving units
- Perfect for 1:1 labeling used in 5S Lean initiatives
- The clear window protects the card stock label (provided)



29308



Flat Label Holder	Dimensions (In.)				Total No.	
Model No.	W	H	Cards Per Sheet	Sheets Per Pack	Cards Per Pack	Label Holders
29308	3	1-1/4	16	3	48	25

# ProCart™

- Versatile, all-purpose plastic utility cart
- Quickly move supplies through your facility
- Deep, molded-in compartments near the handle keep small items/supplies in reach
- AkroBins, 11" Deep Super Modular Cabinets, and Steel Storage Cabinets can be mounted under cart using a Rail System
- Dent-resistant, rust-proof; never needs painting



Hinged side gates on both shelves flip up or down to convert the ProCart to a flat-top or box-top cart



I-Beam post makes it easy to load and unload boxes on the lower shelf



Sides easily raise and lock in place during transport. Lower sides to load or unload shelves



30936



30936, 19909, 30224 plus 30906



30936, 30234GREEN plus 30906

ProCart		Dimensions (In.)			Ctn. Qty.
Model No.	Description	L	W	H	
30936	Large ProCart Structural Foam Utility Cart	45-5/8	24	34-3/4	1
30930	Small ProCart Structural Foam Utility Cart	41-1/2	19	34-3/4	1
30900	Small Cart 9-Rail System for AkroBins	-	-	-	1
30906	Large Cart 9-Rail System for AkroBins	-	-	-	1



# VERSA/Deck™

## Versatile Structural Foam Platform Truck

- Ideal for heavy-duty jobs with up to 2,000 lb. capacity
- Non-skid structural foam deck is easy-to-clean and won't rot, chip or rust
- Handles and rails feature a durable, powder-coated finish
- Customize to your exact needs with multiple size and caster options

VERSA/Deck™



UP TO  
2000  
LBS.

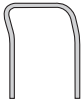


Four molded-in tie-down slots for securing items during transport

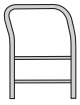


Steel outside deck handle pockets are welded to underdeck reinforcements. Jam Bolts, standard on all models, hold handles in place

"11" Open Swayback



"12" Crossbar Swayback

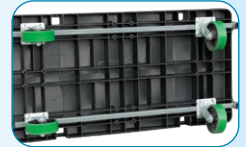


R90182A1411

VERSA/Deck Platform Truck				
Model No.	Deck Size	Handle Type	Caster Type	Caster Size (In.)
R90182A1411	24 x 48	Open	Pro-Tech Polyurethane	6
R90182A1412	24 x 48	Crossbar	Pro-Tech Polyurethane	6
R90185A1412	24 x 48	Crossbar	Pro-Tech Polyurethane	6
V9010093A	24 x 48	NONE	—	—

VERSA/Deck Platform Truck				
Model No.	Deck Size	Handle Type	Caster Type	Caster Size (In.)
V90182A1412	24 x 48	Crossbar	Pro-Tech Polyurethane	6
R90282A1011	30 x 60	Open	Pro-Tech Polyurethane	6
R90282A1012	30 x 60	Crossbar	Pro-Tech Polyurethane	6
R902XA1011	30 x 60	Open	—	—

Ships in carton unassembled.



Under deck steel reinforcements and bolt-on casters provide durability and a weight capacity of up to 2,000 lbs.

# Akro-Carts

- Thick, rugged tub walls
- Medium-duty and heavy-duty styles
- Latch bars extend around the frame for easy loading
- Wide mouth and low profile for easy loading
- Swivel caster for easy maneuverability and handling



Heavy-duty piano hinge allows lid to be propped open during use



UP TO  
450  
LBS.



Akro-Carts			Dimensions (In.)							
Model No. without Lid*	Model No. with Lid	Description	W	D	H	Wheel Size	Wheel Type	Caster	Frame	Load Rating
76460	76461	Medium-Duty 60 Gal. Cap.	30-1/2	48	33-1/2	12" x 2"	Solid Rubber	3 x 1-1/4 Thermoplastic	1" O.D. x 16 ga. powder-coated w/ 5/8" solid axle	300 lbs.
76490	76491	Medium-Duty 90 Gal. Cap.	30-1/2	47	39-1/2	12" x 2"	Solid Rubber	3 x 1-1/4 Thermoplastic	1" O.D. x 16 ga. powder-coated w/ 5/8" solid axle	350 lbs.
76590	76591	Heavy-Duty 90 Gal. Cap.	30-1/2	47	39-1/2	10" x 2-3/4"	Semi-Pneumatic	4 x 2 Mold-on Rubber	1.05" O.D. x 13 ga. powder-coated w/ 5/8" solid axle	450 lbs.

Please specify colors when ordering. For additional colors, call us. \*Carts without lids cannot have lids added after production. Single units are shipped completely assembled. When multiple units are ordered, lids are shipped separately and require assembly.

# Akro-Tilt Trucks

- Trucks nest for shipping, saving on freight and space
- Wheel base and heavy-duty caster combination provides easy maneuverability even with heavy loads
- Models with forklift channels allow fully loaded Akro-Tilt Trucks to be moved and maneuvered by lift trucks, saving time, money and effort†
- Powder-coated tubular frame, constructed of 1.05" O.D. x 13-gauge and 1.3125" O.D. x 13-gauge wall tubes, extends under top rim for added strength
- Fully welded, reinforced frame is optimized for automatic dumper applications



Optional forklift channels allow loaded trucks to be easily lifted and moved



Akro-Tilts have 13-gauge metal lift handles which work with tilt cart dumpers



77710F

UP TO  
2000  
LBS.



77405GREY



77410GREY



77505GREY



77510GREY



77610GREY



77710GREY



77810GREY

Akro-Tilt Trucks			Dimensions (In.)			Wheels		Capacity			
Model No.	Model No. with Fork Channels†	Description	W	D	H	Wheel Diameter	Wheel Type*	Gal.	Cu. Yds.	Cu. Ft.	Load Rating
77405GREY	77405FGREY	Medium-Duty 100	29	59	38	12	SP	100	1/2	13.5	600 lbs.
77410GREY	77410FGREY	Medium-Duty 200	33	68	42	12	SP	200	1	27	600 lbs.
77505GREY	77505FGREY	Heavy-Duty 100	29	59	38	10	MR	100	1/2	13.5	1000 lbs.
77510GREY	77510FGREY	Heavy-Duty 200	33	68	42	10	MR	200	1	27	1000 lbs.
77610GREY	77610FGREY	Super-Heavy-Duty 200	33	68	42	12	MR	200	1	27	2000 lbs.
77710GREY	77710FGREY	Heavy-Duty 300	38	85	50	12	MR	300	1-1/2	40.5	2000 lbs.
77810GREY	77810FGREY	Heavy-Duty 400	48	86	50	12	MR	400	2	54	2000 lbs.

\*SP = Semi-Pneumatic MR = Mold-On Rubber †Forklift channel option eliminates nestability of units.



## Benefits of Kanban for Healthcare:

- Organization of supplies
- Stock is rotated to reduce expired supplies
- Reduces time to find supplies
- Gives time back to clinical staff for care of patients
- Reduce unnecessary inventory holding
- Major cost and time savings

### How Kanban Works

Kanban is a highly effective method of managing inventory through the use of visual cues to alert when items need to be restocked. A Kanban system can be implemented using a two-bin system, a single-bin system, a side-by-side system, Kanban cards or indicator flags.

#### Two-Bin Kanban System

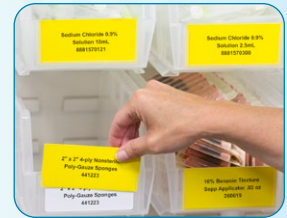
The most popular type of Kanban system uses two bins filled with the same item. The bins are placed on a shelf one in front of the other. When the front bin is empty, the nurse removes it and places it on the top shelf to show that the bin needs to be refilled. The rear bin is pulled to the front for picking. Once the empty bin is refilled, it is put behind the front bin so stock is rotated and items don't expire.



AkroBins®, see page 3

#### Kanban Cards

Kanban cards are placed on storage bins with detailed information about what's in the bin (part number, barcode, etc.). Once the items in the bin reach a minimum stock level, the card is removed and deposited in a location to notify the materials manager to reorder that item.



Use duplicate cards, in two different colors.

#### Single-Bin Kanban System

A single two-sided bin with one end being a brightly colored stock "indicator" is used to hold supplies. A divider marks the minimum stock holding level. Once the primary stock is empty, the bin is turned around to reveal the brightly colored indicator side of the bin. This is a visual cue that the bin needs to be refilled.



Indicator® Bins, see akro-mils.com for more information



For more information on Kanban solutions for Healthcare visit: <https://akro-mils.com/Resources/Kanban>



## Benefits of 5S for Healthcare:

- Eliminate waste and redundancies
- Create extra workspace
- Tighten inventory levels
- Reduce inventory cost
- Find supplies quickly using a standardized color-coded sorting system

Convert your workplace to 5S Lean with innovative products from Akro-Mils!

Organizations that invest in a 5S process gain productivity, create a higher quality product and lower operating costs by simply implementing a system of waste removal, visual identification and efficient use of space.

## What is 5S Lean?

5S Lean is a methodology to improve efficiencies and enhance operational excellence. These proven steps include:

1. Sort
2. Set In Order
3. Shine
4. Standardize
5. Sustain

For more information on 5S Lean visit: <https://akro-mils.com/Resources/5S-Lean>



Watch the Akro-Mils 5S Video



Before



After



akro-mils.com

1293 South Main Street, Akron, Ohio 44301 • Tel: 800.253.2467 • inquiry@akro-mils.com

In Canada: Ak-West, Inc. • Tel: 403-279-8940 • Fax: 403-225-1696 • sales@ak-westinc.com • ak-westinc.com